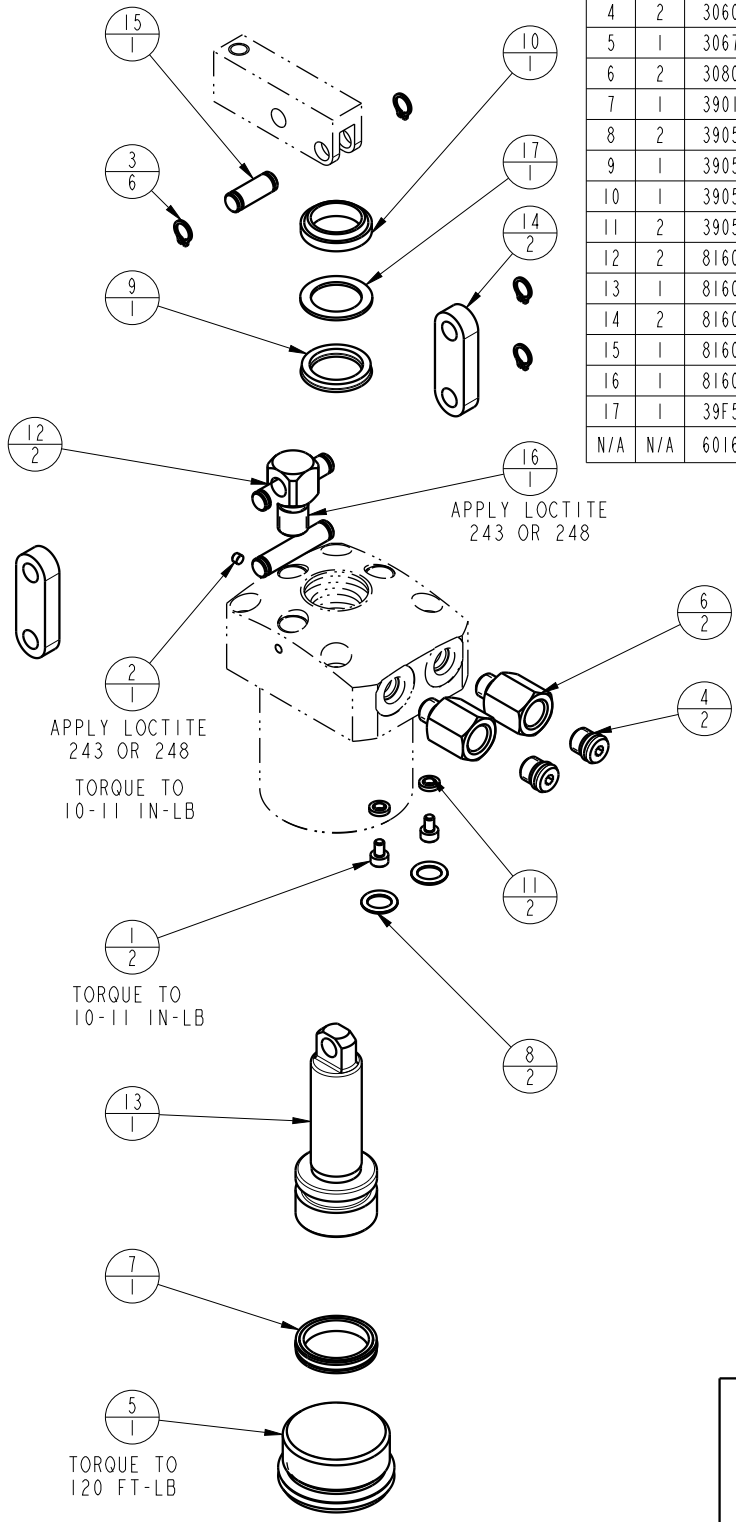


NO	QTY	PART NO	DESCRIPTION	STD SEAL KIT
1	2	21500018	SCREW, CAP, SOCH, M3 X 5, ALY	
2	1	21500314	SCREW, SET, CONE PT, M3 X .5-6g X 3	
3	6	23050021	RING, RTNG, EXT, 0.250	X
4	2	30601122	PLUG, SOCH, SAE 2	
5	1	30670006	PLUG, SAE 16, FKM	X
6	2	30801422	ADAPTER, MALE SAE 2 - FEMALE 1/8 NPT	
7	1	39010023	SEAL, T, (13/16 X 5/32 X 1)	X
8	2	39051025	O-RING, (-011)	X
9	1	39052018	SEAL, U-CUP, 5/8 x 1/8 x 7/8	X
10	1	39053027	WIPER, SNAP-IN, (5/8)	X
11	2	39055011	SEAL, BONDED, M3	
12	2	81600081	PIN, LC, LONG, 450	
13	1	81600089	PLUNGER, LC, LPRESS, 550/2.5 KN, DA	
14	2	81600095	LINK, LC, LPRESS, 550/2.5 KN	
15	1	81600098	PIN, LC, SHORT, LPRESS, 550/2.5 KN	
16	1	81600104	PIVOT, LC, LPRESS, 550/2.5 KN	
17	1	39F54001	BU RING, (-208 CUSTOM)	X
N/A	N/A	60160217	KIT, SEAL, LC, PNEU, I	NOTED



PARTS LIST	 VEKTEK, INC. 1334 E. SIXTH AVE. P.O. BOX 625 EMPORIA, KS. 66801 U.S.A.	
	PARTS LIST, PNEU, I, DA	
	ASSEMBLIES AFFECTED	PPL1660
P1662110	SIZE A	REV D
P1662111		
P1662112		

D	5637	RELEASE	BDC	3/4/25
REV	IN ACCORDANCE WITH ECN	EFFECTIVE DATE	REVISED BY	DATE
DRW BY: G. ROMINE	DRAWING STATUS: Released			
DATE: 6-04-07	PRODUCTION APPROVED FOR RELEASED STATUS ONLY			